

Art dealers unveil their treasures

One of the strengths of Tefaf (The European Fine Art Fair) Maastricht is that it is a generalist fair with something to interest every art lover, covering the whole spectrum of specialties, from Antiquities to contemporary art. This year, the fair is further broadening its purview with a new design art section (see related article) and has also introduced more exhibitors of fine photography, but visitors can still expect to see leading dealers in the more traditional fields. Here is an abbreviated preview of some of the special surprises exhibitors have set aside to show at this year's fair.

Two new exhibitors will be bringing photographs, a specialty that has not been very well represented at Tefaf in the past. Hans P. Kraus, Jr. Fine Photographs of New York will present a very early print of one of William Henry Fox Talbot's most important images, "The Ladder" (1844), a rare untrimmed salt print made from a calotype negative, as well as a view of the Fontainebleau Forest, made around 1852 by Gustave Le Gray (1820-82). Moving into the 20th-century, Kicken Gallery of Berlin will spotlight such important images as André Kertész's amusing "Satiric Dancer, Paris" (1926), a geometric photogram (1925) by László Moholy-Nagy and a silver gelatin print of one of Man Ray's most famous Surrealist photos, "Noire et Blanche" (1926), showing his lover Kiki de Montparnasse's face next to a carved African tribal mask.

Modern and contemporary art will be well represented this year by 45 exhibitors, with a few new faces on hand, including Daniella Luxembourg of London, who will be staging an exhibition of works depicting disasters, in collaboration with Amalia Dayan; Ben Brown, also of London, who will feature one of Lucio Fontana's "Concetto Spaziale" paintings (paper on canvas), dating from 1958; and Kukje Gallery, which specializes in well-known Western artists and emerging Korean artists.

Landau Fine Art of Montreal will present a stellar roster of 120 works by the 20th century's great artists. One of the stars of the show will be "Trois Hommes qui Marchent 1" by Alberto Giacometti, the first of a series of six produced from 1948 to 1950. This impressive sculpture will greet visitors to the gallery's stand, placed in front of a 1928 painting by Fernand Léger, "Les Danseuses aux Clés," which the gallery owner Robert Landau describes as "a forerunner of Pop Art." Other highlights at the stand include a 1953 wooden sculpture by Le Corbusier, entitled "Femme," that has never been seen on the market.

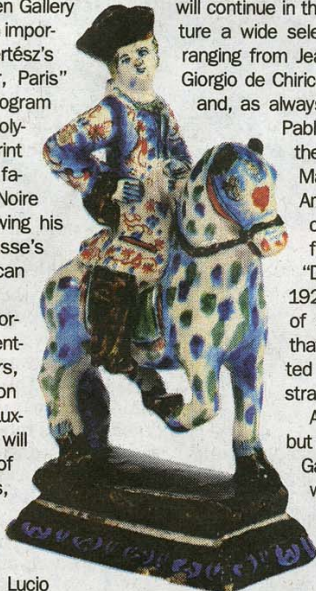
From Picabia to Rousseau

Jacques de la Béraudière, formerly of Cazeau-Béraudière of Paris, recently opened a new gallery under his own name in Geneva's Old Town. Among the masterpieces he will have on his stand at Tefaf this



GALERIE THOMAS

ARONSON ANTIQUAIRE



year are "Amsel ou Sagesse" (1930) by Francis Picabia (1878-1953); an oil painting by Fernand Léger, "Profil Noir" (1928); a very rare painting by Henri Rousseau that has never before been seen on the market, "La Chasse aux Lions" (1890); and, in a more modern vein, a 1962 painting by Pierre Soulages with a blue background.

Another Geneva-based gallery, Jan Krugier, which sadly lost its founder last year but will continue in the same direction, will feature a wide selection of work by names ranging from Jean Arp and Max Ernst to Giorgio de Chirico and Alberto Giacometti, and, as always, a number of works by Pablo Picasso (the gallery is the exclusive agent for the Marina Picasso collection). Among the important works on show will be a page from Picasso's famed "Dinard Sketchbook" of 1928, a pen-and-ink drawing of sculptural human figures that have been deconstructed and almost totally abstracted. Also featuring modern art, but with a narrower focus, is Galerie Thomas of Munich, which is one of the few galleries to specialize in German Expressionism. At this year's fair in Maastricht, the gallery will spotlight a group of eight important paintings by Chaim Soutine (1893-1943), the only French Expressionist. The rest of the stand will focus on German Expressionism, with works by Franz Marc,

Ernst Ludwig Kirchner and others, as well as a group of "Classic Modern" paintings by the likes of Joan Miró and Picasso, and an eye-catching painted wooden sculpture of a reclining harlequin by Ossip Zadkine (1890-1967).

Gallery Delaive of Amsterdam will be featuring a newly acquired work painted by the Dutch artist Karel Appel in 1951, "Oiseau" — a bold, brilliantly colored, highly graphic

and whimsical piece painted in the artist's Paris studio at a time when the CoBrA movement, which he had helped found, was at its end. Other new acquisitions include a number of colorful works by the French sculptor Niki de Saint-Phalle. The gallery will also spotlight the work of the self-taught Japanese-anime-influenced artist Ayako Rokkaku.

One of the more unusual stands at the fair is always that of Axel Vervoordt. This eclectic

Highlights at the fair: "Arlequin Couché" by Ossip Zadkine (1890-1967). Below, insert: Dutch Delftware (c. 1705-15).